

Report FY 2009-7

***Fiscal Years 2010-2013  
Transportation Capital  
Improvement Program***

Des Moines Area Metropolitan Planning Organization  
June 26, 2009

THIS PAGE LEFT BLANK INTENTIONALLY

## TABLE OF CONTENTS

---

Introduction.....	5
Explanation of Funding Sources.....	7
Ankeny .....	9
Carlisle .....	11
Clive.....	12
Dallas County.....	13
Des Moines .....	14
Grimes.....	16
Johnston .....	17
Norwalk.....	19
Polk County .....	20
Urbandale.....	25
Warren County.....	27
Waukee .....	28
West Des Moines .....	29
Windsor Heights .....	31
Map of Fiscal Years 2010-2013 Project Locations.....	33

THIS PAGE LEFT BLANK INTENTIONALLY

## INTRODUCTION

---

The Transportation Capital Improvement Program (TCIP) includes all transportation projects and improvements in the Des Moines Area Metropolitan Planning Organization (MPO) planning area that are not federally funded. The projects listed within this document are capital improvement projects that affect the MPO Planning Area's transportation system. These transportation projects are compiled from the MPO member governments' respective capital improvement plans.

The TCIP, along with the Transportation Improvement Program (TIP), is prepared annually for upcoming fiscal years and allows the MPO and its members to have a more comprehensive view of transportation projects and improvements that are going to be implemented throughout the MPO Planning Area. This document contains all planned TCIP projects for Fiscal Years 2010-2013 as of June 2009 (Fiscal Year runs from July 1 to June 30).

The MPO includes sixteen member cities: Altoona, Ankeny, Bondurant, Carlisle, Clive, Des Moines, Grimes, Johnston, Mitchellville, Norwalk, Pleasant Hill, Polk City, Urbandale, Waukee, West Des Moines, Windsor Heights; two associate non-voting cities: Cumming and Indianola; and includes unincorporated portions of three member counties: Dallas County, Polk County, and Warren County. MPO membership and voting privilege is open to all local governments that possess a population of 1,500 persons or more persons and are located within the MPO Planning Area Boundary. The MPO carries out its transportation planning responsibilities in cooperation with the Iowa Department of Transportation (Iowa DOT), the Des Moines Area Regional Transit Authority (DART) and the Heart of Iowa Regional Transit Agency (HIRTA). Special thanks to the MPO members who have provided the information within this document; not all local governments prepare CIPs.

The members of the MPO consider the planned projects listed within this document to be subject to change at any time.

THIS PAGE LEFT BLANK INTENTIONALLY

## MAJOR BUDGET PROGRAMS AND ABBREVIATIONS

---

**Assessment** – Fees assessed to the affected property owners to assist with project funding.

**General Obligation Bonds** (G.O. Bonds) - Issued to get money on credit for projects, popular because primarily based the ability to tax; the most common source of funding projects.

**Road User Tax Fee** (RUT) – Part of the gasoline tax received from the State of Iowa for roadway projects.

**Tax Increment Financing** (TIF) – Funds spent on current projects based on the assumed increase of tax revenue in a TIF-designated district.

**Gifts** – Private funding contributions for a project.

**Grants** – State funding support.

**Gaming Monies** – Revenues received from state gambling entities.

**Developer** - Developer contributions assist in project funding.

**Farm-to-Market** – State or county designated roadways with connected funds to assist movement of agriculture products on secondary roads.

**Local** – Funds designated primarily to aid local residents in movement.

**General Funds** – Unobligated city funds.

**(Blank)** – Funding sources not cited in CIP.

THIS PAGE LEFT BLANK INTENTIONALLY

## City of Ankeny

Funding Year	Street or Route	Termini	Type of Work	Funding By Year				Source of Local Funding	
				2010	2011	2012	2013		2010-2013 Total
2010	Magazine Road	Extension from South Ankeny Blvd. to the NE collector leaving the Town Center	New Construction	\$2,950,000				\$2,950,000	Cash, G.O. Bonds and Gifts
2010	Town Center	Parking Garage	New Construction	\$3,000,000				\$3,000,000	G.O. Bonds-TIF and Gifts
2010	SW Magazine Road Extension	From East edge of Town Center to Ankeny Blvd.	New Construction	\$2,950,000				\$2,950,000	Capital Project
2010	SW Cherry Street Extension	SW Magazine to SW Ordinance	New Construction	\$700,000				\$700,000	Cash, G.O. Bonds
2010	State Street Underpass / Oralabor Road Overpass	Part of Trail Connecting to Town Center to the West	New Trail Underpass/Overpass Construction	\$2,080,000				\$2,080,000	Special Assessment Bonds
2010-2011	Various Locations	Greenway/Trail Improvements	Trail Construction	\$400,000	\$400,000			\$800,000	G.O. Bonds and Gifts
2010-2011	NW 13th Street / Rock Creek	NW 13th St. from Boulder Brook west to NW Weigel Dr.	Culvert Construction	\$120,000	\$505,000			\$625,000	G.O. Bonds
2011	SW Plaza Parkway Extension	From SW Collector to Irvinedale Dr. north of multi-family in the SW corner of the development	New Construction		\$535,000			\$535,000	Gifts
2011	SE Creekview Drive	From East First St. south 5300' to the future connection with SE Magazine Rd.	New Construction		\$2,500,000			\$2,500,000	G.O. Bonds-TIF
2011	SW Vintage Parkway	Collector St. from State St. to Irvinedale Dr.	New Construction		\$2,159,700			\$2,159,700	G.O. Bonds-TIF

# City of Ankeny

Funding Year	Street or Route	Termini	Type of Work	Funding By Year				Source of Local Funding	
				2010	2011	2012	2013		2010-2013 Total
2011	SE Delaware Avenue	From Corporate Woods Dr. to Des Moines city limits	Widening		\$400,000			\$400,000	G.O. Bonds-TIF
2010-2012	SW Des Moines Street/Parkway Extension	From Prairie Trail Pkwy. to Ordhanse Rd.	New Construction	\$2,435,000	\$1,275,000	\$415,000		\$4,125,000	G.O. Bonds-TIF and Gifts
2012	NE Delaware Avenue	From NE 5th St. to NE 18th St.	Widening			\$3,500,000		\$3,500,000	G.O. Bonds
2012	SW 3rd Street	From SW Maple St. to SW Elm St.	Reconstruction			\$903,000		\$903,000	G.O. Bonds-TIF
2012	SW Cherry Street	From SW 3rd St. to SW 4th St.	Reconstruction			\$300,000		\$300,000	G.O. Bonds-TIF and Gifts
2012	NE Delaware Avenue	NE Delaware Ave. and Culvert 14th St.	Reconstruction			\$600,000		\$600,000	G.O. Bonds
2013	NE 18th Street	Interstate 35	New Overpass Construction				\$3,000,000	\$3,000,000	G.O. Bonds
2013	SW Prairie Trail Parkway	Collector from Ankeny Blvd. to Invinedale Dr.	New Construction				\$1,635,000	\$1,635,000	G.O. Bonds-TIF
2010-2013	Various Locations	Annual Sidewalk/Trail Construction Program	Sidewalk/Trail Construction	\$125,000	\$125,000	\$125,000	\$125,000	\$500,000	G.O. Bonds
2010-2013	Various Locations	Annual PCC St. Reconstruction	Maintenance	\$500,000	\$500,000	\$500,000	\$500,000	\$2,000,000	G.O. Bonds
2010-2013	Various Locations	Annual Asphalt St. Resurfacing	Maintenance	\$250,000	\$150,000	\$150,000	\$150,000	\$700,000	G.O. Bonds
2010-2013	Various Locations	Annual Traffic Signal Installation	New Traffic Signal Installation	\$364,000	\$375,000	\$360,000	\$375,000	\$1,474,000	G.O. Bonds
<b>TOTAL</b>				<b>#####</b>	<b>\$7,774,700</b>	<b>\$5,718,000</b>	<b>\$5,785,000</b>	<b>#####</b>	<b>#####</b>

## City of Carlisle

Funding Year	Street or Route	Termini	Type of Work	Funding By Year				2010-2013 Total	Source of Local Funding
				2010	2011	2012	2013		
2010	Linden Street		Extend	\$200,000				\$200,000	RUT and Assessments
2011	S. 8th Street		Extend		\$100,000			\$100,000	Developer
2010	Main Street		Pave		\$200,000			\$200,000	RUT and Assessments
2011	Main side streets		Pave		\$150,000			\$150,000	RUT and Assessments
2012	Downtown		Trailhead Construction			\$250,000		\$250,000	RUT and Assessments, G.O. Bonds, WCPP Grant and Contributions
2012	SE 64th Avenue/SE 52nd Street		Intersection			\$800,000		\$800,000	G.O. Bonds, Assessments, Other Funds
2012	Jefferson Street		Pave			\$100,000		\$100,000	RUT and Assessments
2012			Railroad grade separation				\$1,200,000	\$1,200,000	RUT and Other Funds
2012	2nd Street		Pave				\$100,000	\$100,000	RUT and Assessments
<b>TOTAL</b>				<b>\$200,000</b>	<b>\$450,000</b>	<b>\$1,150,000</b>	<b>\$1,300,000</b>	<b>\$3,100,000</b>	

## City of Clive

Funding Year	Street or Route	Termini	Type of Work	Funding By Year				Source of Local Funding
				2010	2011	2012	2013	
2010	NW 111th Street and Hickman Road	Intersection	Improvements	\$500,000				\$500,000
2010	University Avenue and 73rd Street	Intersection	Improvements	\$1,500,000				\$1,500,000
2010	NW 118th Street and University Avenue	Intersection	Improvements	\$75,000				\$75,000
2010	NW 142nd Street and Hickman Road	Intersection	Improvements	\$700,000				\$700,000 G.O. Bonds
2010	86th Street Street Corridor Streetscape	Phase II	Streetscape	\$1,000,000				\$1,000,000 G.O. Bonds
2012	NW 114th Street		Pavement Widening		\$1,000,000			\$1,000,000 G.O. Bonds
2011	Aquatic Facility Trail		Connection		\$225,000			\$225,000 G.O. Bonds
2012	Douglas Parkway		Widening/Reconstructi			\$3,500,000		\$3,500,000
2012	86th Street Street Corridor Streetscape	Phase III	Streetscape			\$1,000,000		\$1,000,000 G.O. Bonds
<b>TOTAL</b>				<b>\$3,775,000</b>	<b>\$1,225,000</b>	<b>\$3,500,000</b>	<b>\$0</b>	<b>\$8,500,000</b>

## Dallas County

Funding Year	Street or Route	Termini	Type of Work	Funding By Year				Source of Local Funding	
				2010	2011	2012	2013		2010-2013 Total
2010	P-48 & F-59	Dexter north to F-59 and east to Redfield	Pavement Rehab	\$2,000,000				\$2,000,000	Farm-to-Market
2010	Knox Avenue	360th Street to Madison County	Grade and Pave	\$600,000				\$600,000	Farm-to-Market
2010	P-46	IA 141 to Greene County	Pavement Rehab		\$750,000			\$750,000	Local
2011	P-58	F-25 north to Perry	Resurfacing		\$1,000,000			\$1,000,000	Farm-to-Market
2012	R-16	U.S. 6 to Dallas Center	Pavement Rehab			\$1,500,000		\$1,500,000	Farm-to-Market
<b>TOTAL</b>				<b>\$2,600,000</b>	<b>\$1,750,000</b>	<b>\$1,500,000</b>	<b>\$0</b>	<b>\$4,350,000</b>	

# City of Grimes

Funding Year	Street or Route	Termini	Type of Work	Funding By Year			Source of Local Funding
				2010	2011 and Beyond	2010-2011+ Total	
2011	NW 78th Avenue	HWY 141 to NW 107th St.	HMA Overlay	\$100,000		\$100,000	Road Use
2010	NW 111th Street		Reconstruction	\$200,000		\$200,000	
2011	NW 142nd Avenue	HWY 44 to NW 82nd St.	HMA Overlay		\$600,000	\$600,000	G.O. Bonds, Road Use
2011	S. 11th Street	R.R. to S. James St	Extension		\$960,000	\$960,000	Assessment, G.O. Bonds
2011+	N. James Street	N. 2nd St. to N. 13th St.	Reconstruction		\$3,000,000	\$3,000,000	Assessment, G.O. Bonds
2011+	N. James Street	at Beaverbrooke Blvd.	Intersection		\$1,000,000	\$1,000,000	Assessment, G.O. Bonds
2011+	NW 54th Avenue	HWY 141 to NW 100th St.	Reconstruction		\$3,500,000	\$3,500,000	Assessment, G.O. Bonds
2011+	S. Main Street	S. 1st St to S. 6th St	Reconstruction		\$2,000,000	\$2,000,000	Assessment, G.O. Bonds
2011+	N. Main St	HWY 44 to N. 10th St.	Reconstruction		\$1,200,000	\$1,200,000	Assessment, G.O. Bonds
2011+	S. 19th Street	IA 141 to East City Limits	Reconstruction		\$1,500,000	\$1,500,000	Assessment, G.O. Bonds
2011+	S. 19th Street	Jacob St. to S. James St.	Extension		\$1,000,000	\$1,000,000	Assessment, G.O. Bonds
2011+	NW 58th Avenue	HWY 141	Signals		\$1,000,000	\$1,000,000	Assessment, G.O. Bonds
2011+	NW 54th Avenue	S. James St.	Intersection/Signals		\$4,500,000	\$4,500,000	Assessment, G.O. Bonds
2011+	S. 11th Street	HWY 141	Signals and Turn Lanes		\$800,000	\$800,000	G.O. Bonds, Others
<b>TOTAL</b>				<b>\$300,000</b>	<b>\$21,060,000</b>	<b>\$21,360,000</b>	

# City of Des Moines

Funding Year	Street or Route	Termini	Type of Work	Funding By Year				Source of Local Funding	
				2010	2011	2012	2013		2010-2013 Total
2010	City-Wide	Various Locations	Traffic Median Island Replacement	\$80,000				\$80,000	G.O. Bonds
2010	Army Post Road	SE 5th to SW 9th Street	Widening	\$850,000				\$850,000	G.O. Bonds, State
2010	SE 6th Street	Court Avenue to the Des Moines River	Widening	\$100,000				\$100,000	TIF
2010-2011	Army Post Road	Over Frink Creek	Bridge Renovation	\$365,000	\$200,000			\$565,000	Gaming Monies, State Grant
2010-2012	S.W. Seventh Street Bridge	Over the Raccoon River	Bridge Rehabilitation	\$1,400,000	\$100,000	\$200,000		\$1,700,000	G.O. Bonds
2010-2013	McKinley Avenue	Fleur Drive to E Indianola Avenue	Widening	\$800,000	\$700,000	\$500,000		\$2,000,000	G.O. Bonds
2011-2012	Merle Hay Road	Ovid Avenue to Douglas Avenue	Widening		\$500,000	\$320,000		\$820,000	G.O. Bonds, State
2011-2013	East Payton Avenue Bridge	Over Stream	Bridge Replacement	\$100,000	\$350,000	\$300,000		\$750,000	G.O. Bonds
2011-2013	31st Street	I-235 to University Avenue	Widening	\$150,000	\$1,100,000	\$100,000		\$1,350,000	G.O. Bonds
2010-2013	City-Wide	Various Locations	PCC Pavement Program	\$175,000		\$225,000		\$625,000	G.O. Bonds
2010-2013	City-Wide	Various Locations	Railroad Crossing Surface Repairs and Signal Improvements	\$50,000		\$50,000		\$100,000	G.O. Bonds
2010-2013	Evergreen Avenue	Over Easter Lake	Bridge Rehabilitation			\$100,000	\$300,000	\$400,000	G.O. Bonds, Other
2010-2013	University Avenue	Sixth Avenue to Tenth Street	Widening	\$100,000	\$200,000	\$500,000	\$1,000,000	\$1,800,000	G.O. Bonds
2010-2013	City-Wide	Various Locations	School Routes and Priority Sidewalks	\$100,000	\$100,000	\$100,000	\$100,000	\$400,000	Assessments, G.O. Bonds
2010-2013	City-Wide	Various Locations	Downtown Skywalk System	\$130,000	\$135,000	\$140,000	\$145,000	\$550,000	TIF
2010-2013	City-Wide	Various Locations	City Sidewalks- Replacement	\$265,000	\$275,000	\$285,000	\$295,000	\$1,120,000	G.O. Bonds

## City of Des Moines

Funding Year	Street or Route	Termini	Type of Work	Funding By Year				Source of Local Funding	
				2010	2011	2012	2013		2010-2013 Total
2010	City-Wide	Various Locations	Concrete Paving Restoration Program	\$575,000	\$595,000	\$620,000	\$640,000	\$2,430,000	G.O. Bonds
2010-2013	City-Wide	Various Locations	Paving Program	\$640,000	\$1,000,000	\$125,000	\$1,000,000	\$2,765,000	Assessments G.O. Bonds
2010-2013	City-Wide	Various Locations	Annual Repairs	\$300,000	\$300,000	\$300,000	\$300,000	\$1,200,000	Gaming Monies, G.O. Bonds
2010-2013	City-Wide	Various Locations	Asphaltic Paving Restoration Program	\$800,000	\$825,000	\$850,000	\$880,000	\$3,355,000	G.O. Bonds
2010-2013	City-Wide	Various Locations	City Sidewalks-ADA Compliance	\$250,000	\$260,000	\$270,000	\$280,000	\$1,060,000	G.O. Bonds
2010-2013	City-Wide	Various Locations	Parking Facility Rehab/Repair Program	\$1,000,000	\$1,000,000	\$1,000,000	\$1,250,000	\$4,250,000	Parking Fund
2010-2013	City-Wide	Various Locations	Concrete Curb Replacement Program	\$570,000	\$595,000	\$620,000	\$645,000	\$2,430,000	G.O. Bonds
2010-2013	City-Wide	Various Locations	Downtown Area Street Restoration	\$300,000	\$300,000	\$300,000	\$300,000	\$1,200,000	TIF
2010-2013	City-Wide	Various Locations	Special City-wide Street Improvements	\$2,685,000	\$2,685,000	\$2,685,000	\$2,685,000	\$10,740,000	Gaming Monies
2010-2013	City-Wide	Various Locations	City-wide Neighborhood Traffic Control Program	\$30,000	\$30,000	\$30,000	\$30,000	\$120,000	G.O. Bonds
2010-2013	City-Wide	Various Locations	City-wide Signals, Channelization, and School Crossing Protection Program	\$455,000	\$405,000	\$425,000	\$425,000	\$1,710,000	G.O. Bonds, State
<b>TOTAL</b>				<b>\$12,020,000</b>	<b>\$10,455,000</b>	<b>\$11,095,000</b>	<b>\$10,900,000</b>	<b>\$44,470,000</b>	

## City of Johnston

Funding Year	Street or Route	Termini	Type of Work	Funding By Year			Source of Local Funding	
				2010	2011	2012		2010-2013 Total
2010	Trail	Interurban to NW 49th St.	Trail Construction	\$70,000			\$70,000	Decision Package
2010	NW Beaver Drive	Johnston Drive to NW 62nd Ave.	Widening	\$3,000,000			\$3,000,000	TIF #1
2010	NW 86th Street	Windsor Parkway to S	Widening	\$1,118,000			\$1,118,000	G.O. Bonds
2010	62nd & 100th		Signals	\$250,000			\$250,000	G.O. Bonds
2010	Augustine Trail		Trail Construction	\$700,000			\$700,000	G.O. Bonds, TIF #3
2010	Trail	Dewey Park to Beaver Dr.	Trail Construction	\$40,000			\$40,000	Park & Trail Impr. Fund 318
2010	Trail	Ashton Pointe to 86th St.	Trail Construction	\$40,000			\$40,000	Park & Trail Impr. Fund 318
2010	100th Street	62nd Ave. to 70th Ave.	Overlay	\$425,500				G.O. Bonds
2010	107th Street	70th Ave. to 78th Ave.	Design	\$450,000			\$450,000	G.O. Bonds
2011	NW 107th Street	70th Ave. to 78th Ave.	Construction		\$2,550,000		\$2,550,000	G.O. Bonds
2011	East MHR		Master Impr Plan		\$100,000		\$100,000	G.O. Bonds
2010-2011	Various Locations	City-wide	Trail Signage	\$25,000	\$25,000	\$25,000	\$75,000	Grant
2011	Trail	Summit Dr. to Highland Oaks	Design		\$30,000		\$30,000	Park & Trail Impr. Fund 318
2011	107th Street	70th Ave. to 78th Ave.	Roadway Project Improvement		\$2,550,000		\$2,550,000	G.O. Bonds
2012	100th Street	70th Ave. to North City	Roadway Project Improvement			\$450,000	\$450,000	G.O. Bonds
2012	Trail	E 62nd Ave.	Design			\$100,000	\$100,000	Decision Package
2012	NW 100th Street	NW 70th Ave. to N City Limits	Design			\$400,000	\$400,000	G.O. Bonds
2012	Trail	62nd Ave. to MHR Trailhead	Design			\$6,000	\$6,000	Park & Trail Impr. Fund 318

## City of Johnston

Funding Year	Street or Route	Termini	Type of Work	Funding By Year				Source of Local Funding
				2010	2011	2012	2013	
2013	Trail	Adam Ridge Park to 62nd Ave.	Design			\$40,000	\$40,000	Decision Package
2013	NW 100th Street	70th Ave. to N City Limits	Construction			\$2,550,000	\$2,550,000	G.O. Bonds
2013	54th Avenue	NW 100th St.	Intersection			\$1,000,000	\$1,000,000	G.O. Bonds
2013	NW 62nd Avenue	NW 103rd to City Limits	Construction			\$2,100,000	\$2,100,000	G.O. Bonds
<b>TOTAL</b>				<b>\$6,118,500</b>	<b>\$5,255,000</b>	<b>\$981,000</b>	<b>\$5,690,000</b>	<b>\$17,619,000</b>

# Polk County

Funding Year	Street or Route	Termini	Type of Work	Funding By Year				Source of Local Funding	
				2010	2011	2012	2013		2010-2013 Total
2010	NE 80 Street/NE 126 Avenue	NE 134 Ave.	Resurface	\$235,000				\$235,000	Local Access
2010	NE 80 Street	NE 94 Ave. to N of NE 78 Ave.	Resurface	\$194,000				\$194,000	Local Access
2010	NE 38 Avenue	NE 80 St. to NE 96 St.	Resurface	\$263,000				\$263,000	Local Access
2010	SE Avon Drive	SE 60 St. South	Resurface	\$111,000				\$111,000	Local Access
2010	NE 130 Avenue/NE 64 Street	NE 46 St. to NE 126 Ave.	Resurface	\$198,000				\$198,000	Local Access
2010	NE 70 Avenue	NE 112 St. to NE 120 St.	Resurface	\$132,000				\$132,000	Local Access
2010	SE Vandalia Drive	E. of SE 120 St.	Resurface	\$36,000				\$36,000	Local Access
2010	Iowa Fund Runds	E. of NE 14 St. South of NE 54 Ave.	Resurface	\$363,000				\$363,000	Local Access
2010	NE 102 Avenue	Hwy 65 to County Line	Resurface	\$273,000				\$273,000	Local Access
2010	NE 23 Avenue	NE 96 St. to NE 112 St.	Resurface	\$263,000				\$263,000	Local Access
2010	NE 88 Street	NE 94 Ave. to NE 108 Ave.	Resurface	\$264,000				\$264,000	Local Access
2010	NW 82 Avenue	NW 142 St. to NW 128 St.	Resurface	\$132,000				\$132,000	Local Access
2010	NW 128 Street/NW 121 Street	S of NW 82 Ave. to Hwy 141	Resurface	\$383,000				\$383,000	Local Access
2010	NE 64 Street	NE 94 Ave. to NE 78 Ave.	Resurface	\$263,000				\$263,000	Local Access
2010	NE 27 Avenue	NE 88 St. to NE 96 St.	Resurface	\$132,000				\$132,000	Local Access
2010	SE 78 Street	SE 9 Ave. to SE 32 Ave.	Resurface	\$226,000				\$226,000	Local Access
2010	NE 62 Avenue	EaSt. of NE Berwick Dr.	Bridge Deck Overlay	\$200,000				\$200,000	Local Access

# Polk County

Funding Year	Street or Route	Termini	Type of Work	Funding By Year			Source of Local Funding
				2010	2011	2012	
2010	NW 6 Drive	S of NW Hoffman Lane	Bridge Replacement	\$420,000			Farm-to-Market
2010	NE 70 Street & NE 80 Street	At Hwy 163	Traffic Safety	\$765,000			Local Access
2011	NE 3 Street	NE 60 Ave. to NE 42 Ave.	Resurface		\$261,000		Farm-to-Market
2011	NW 16 Street	NW 110 Ave. to NW 118 Ave.	Resurface		\$225,000		Farm-to-Market
2011	NE 56 Street	NE 138 Ave. to NE 126 Ave.	Resurface		\$198,000		Local Access
2011	NE 118/NE 110 Avenue/NE 80 Street	NE 94 Ave. to NE Rieck Dr.	Resurface		\$393,000		Local Access
2011	NE 80 Street	NE 54 Ave. to NE 46 Ave.	Resurface		\$131,000		Local Access
2011	SE 82 Street	SE 32 Ave. to SE Vandalia	Resurface		\$135,000		Local Access
2011	SE 13 Avenue	SE 80 St. to SE 93 St.	Resurface		\$165,000		Local Access
2011	SE 92 Street/Jarvis Ave.	SE 6 Ave. to SE 32 Ave.	Resurface		\$263,000		Local Access
2011	NW 112 Avenue/NW 118 Avenue	Hwy 17 to Jester Park	Resurface		\$184,000		Local Access
2011	NW 72 Street	NW Hugg Dr. to NW 142 Ave.	Resurface		\$297,000		Local Access
2011	NE 142 Avenue	NE 29 St. to NE 38 St.	Resurface		\$133,000		Local Access
2011	NE 150 Avenue	NE 72 St. to NE 96 St.	Resurface		\$396,000		Local Access
2011	NE 110 Avenue	NE 112 St. to County Line	Resurface		\$124,000		Local Access
2011	NE 88 Street	NE 78 Ave. to Hwy 65	Resurface		\$120,000		Local Access
2011	NE 75/76/78 NE 106 and NE 109 Street	NE 82 Ave. to NE 96 St.	Resurface		\$465,000		Local Access

# Polk County

Funding Year	Street or Route	Termini	Type of Work	Funding By Year				Source of Local Funding	
				2010	2011	2012	2013		2010-2013 Total
2011	NE 29 Street	NE 126 Ave. to NE 110 Ave.	Resurface		\$264,000			\$264,000	Local Access
2011	NE Casebeer	NE 64 St. - SW	Resurface		\$92,000			\$92,000	Local Access
2011	NE 108 Street/NE 110 Street	NE 46 Ave. to NE 58 Ave.	Resurface		\$202,000			\$202,000	Local Access
2011	SE 20 Avenue	SE 92 St. to SE 108 St.	Resurface		\$267,000			\$267,000	Local Access
2011	SE 23 Avenue	E. of SE 124 St.	Bridge		\$90,000			\$90,000	Local Access
2011	NE 120 Street	S. of NE 44 Ave.	Bridge		\$50,000			\$50,000	Local Access
2011	NE 96 Street	S. of NE 142 Ave.	Bridge		\$80,000			\$80,000	Farm-to-Market
2011	NW 150 Avenue	W. of NW 16 St.	Bridge		\$100,000			\$100,000	Local Access
2012	NW 16 Street	NW 142 Ave. to NW 166 Ave.	Grading			\$500,000		\$500,000	Local Access
2012	NW 86 Street	Between NW 150 Ave. & NW 142 Ave.	Grading and Culvert Replacement			\$670,000		\$670,000	Farm-to-Market
2012	NE 72 Street/NE 70 Street	Hwy 163 to NE 27 Ave.	Resurface			\$300,000		\$300,000	Farm-to-Market
2012	NW 138 Avenue	NW 128 St. E. to Hwy 17	Resurface			\$294,000		\$294,000	Local Access
2012	NE 91 Street/SE Garrett Drive	Hwy 163 to SE 6 Ave.	Resurface			\$249,000		\$249,000	Local Access
2012	NE 120 Street	NE 70 Ave. to I-80	Resurface			\$70,000		\$70,000	Local Access
2012	NE 120 Street	NE 58 Ave. to NE 54 Ave.	Resurface			\$70,000		\$70,000	Local Access
2012	NE 58 Avenue	NE 14 St. to NE 22 St.	Resurface			\$141,000		\$141,000	Local Access
2012	Saylor Township	S. of I-35	Resurface			\$1,449,000		\$1,449,000	Local Access

# Polk County

Funding Year	Street or Route	Termini	Type of Work	Funding By Year				Source of Local Funding	
				2010	2011	2012	2013		2010-2013 Total
2012	NE 38 Street	NE 94 Ave. to NE 126 Ave.	Resurface			\$569,000		\$569,000	Local Access
2012	NE 96 Street	N of NE 58 Ave.	Bridge			\$200,000		\$200,000	Local Access
2012	NE 78 Avenue	at NE 88 St.	Bridge			\$75,000		\$75,000	Local Access
2012	NW 102 Avenue	S of Hwy 141	Bridge			\$250,000		\$250,000	Local Access/Farm-to-Market
2013	NW 26 Street	S of NW 102 Ave.	Culvert Repair				\$15,000	\$15,000	Local Access
2013	NE 88 Street/NE 62 Dr	From NE 54 Ave. to NE Resurface					\$277,000	\$277,000	Local Access
2013	NE 29 Street	1/2 Mile S. of NE 94 A\	Culvert Repair				\$100,000	\$100,000	Farm-to-Market
2013	NE 134 Avenue	From NE 112 St. to NE Resurface					\$140,000	\$140,000	Local Access
2013	NE 126 Avenue	From W of to NE 6 St.	Bridge Rail Retrofit				\$100,000	\$100,000	Local Access
2013	NE Rising Sun	From NE 64 St. to NE Resurface					\$134,000	\$134,000	Local Access
2013	NE 29 Street	From S. of to NE 54 A\	Culvert Replacement				\$20,000	\$20,000	Local Access
2013	NW 134 Avenue	From E. of to NW 2 St.	Culvert Replacement				\$15,000	\$15,000	Local Access
2013	NW 16 Street	From NW 142 Ave. to I\ Pave					\$1,250,000	\$1,250,000	Farm-to-Market
2013	NW 128 Street	From NW 146 Ave. to I\ Resurface					\$140,000	\$140,000	Local Access
2013	NE 46 Street	From S. of NE 62 Ave.	Resurface				\$105,000	\$105,000	Local Access
2013	NE 134 Avenue	From NE 29 St. W. to E Resurface					\$67,000	\$67,000	Local Access
2013	NE 110 Avenue	From NE 29 St. to NE Resurface					\$141,000	\$141,000	Local Access

# Polk County

Funding Year	Street or Route	Termini	Type of Work	Funding By Year				Source of Local Funding	
				2010	2011	2012	2013		2010-2013 Total
2013	NE 110 Avenue	From NE 64 St. to NE 110 St.	Resurface				\$132,000	\$132,000	Local Access
2013	NE 78 Avenue	From NE 112 St. to NE 78 St.	Resurface				\$140,000	\$140,000	Local Access
2013	NE 40 Avenue/NE Dev	From NE 96 St. to NE 40 St.	Resurface				\$214,000	\$214,000	Local Access
2013	NE 23 Avenue	From NE 112 St. to NE 23 St.	Resurface				\$127,000	\$127,000	Local Access
2013	NW 134 Avenue	From NW 16 St. to NE 134 St.	Resurface				\$176,000	\$176,000	Local Access
2013	NW 26 Street	From NW 84 Ave. to N 26 St.	Resurface				\$71,000	\$71,000	Local Access
2013	NE 126 Avenue/NE Yo	From Elkhart City Limit	Resurface				\$900,000	\$900,000	Farm-to-Market
2013	NW 150 Avenue	From Hwy 17 to NW M	Resurface				\$210,000	\$210,000	Local Access
2013	NE 120 Street	From NE 110 Ave. to N 120 St.	Resurface				\$69,000	\$69,000	Local Access
2013	NE 100 Avenue/NE 94	From NE 88 St. to NE 100 St.	Resurface				\$210,000	\$210,000	Local Access
2013	NE 70 Avenue	From NE 80 St. to NE 70 St.	Resurface				\$560,000	\$560,000	Local Access
2013	NE 22 Street	From NE 66 Ave. to D	Resurface				\$351,000	\$351,000	Local Access
2013	NE 29 Street	From NE 150 Ave. to N 29 St.	Resurface				\$351,000	\$351,000	Local Access
2013	NE 72 Street	From NE 70 Ave. to NE 72 St.	Resurface				\$600,000	\$600,000	Farm-to-Market
<b>TOTAL</b>				<b>\$4,853,000</b>	<b>\$4,635,000</b>	<b>\$4,837,000</b>	<b>\$6,615,000</b>	<b>\$20,940,000</b>	

## City of Norwalk

Funding Year	Street or Route	Termini	Type of Work	Funding By Year				2010-2013 Total	Source of Local Funding
				2010	2011	2012	2013		
2011	Ponderosa Drive					\$65,000	\$65,000	RUT & Assessment	
2012	50th Ave.		Pedestrian Trail				\$600,000	Grants & G.O. Bonds	
2010-2013	Street Resurfacing			\$200,000	\$500,000	\$300,000	\$1,300,000	RUT & Assessment & G.O. Bonds	
<b>TOTAL</b>				<b>\$200,000</b>	<b>\$500,000</b>	<b>\$365,000</b>	<b>\$900,000</b>	<b>\$1,965,000</b>	

## City of Urbandale

Funding Year	Street or Route	Termini	Type of Work	Funding By Year				Source of Local Funding	
				2010	2011	2012	2013		2010-2013 Total
2010	Meredith Drive	Walnut Creek Bridge	Bridge Replacement	\$1,438,900				\$1,438,900	G.O. Bonds
2010	Aurora Avenue	128th St. to 142nd St.	Repaving	\$1,084,500				\$1,084,500	G.O. Bonds, Spec Assessment
2010	86th Street and Douglas Avenue	Intersection	Intersection Improvements	\$784,000				\$784,000	G.O. Bonds
2010	100th Street	to Interstate 35/80	Extension	\$2,282,300				\$2,282,300	TIF, Developer
2010	Hickman Road	Entrance to Deerfield Development	Traffic Signal Installation	\$140,000				\$140,000	Private
2010	Meredith Avenue	Walnut Creek	Bridge Replacement	\$1,438,900				\$1,438,900	G.O. Bonds
2010	Meredith Drive	142nd St. to 156th St.	Street Construction	\$3,434,900				\$3,434,900	G.O. Bonds, Spc
2010	100th Street and Plum Drive	Intersection	Traffic Signal Installation	\$135,000				\$135,000	G.O. Bonds, Private
2010	104th Street and Meredith Drive	Intersection	Traffic Signal Installation	\$140,000				\$140,000	G.O. Bonds
2010-2011	Aurora Avenue	112th St.	Reconstruction	\$30,000	\$280,000			\$310,000	G.O. Bonds
2011	Aurora Avenue	Walnut Creek Bridge	Bridge Construction		\$1,035,000			\$1,035,000	G.O. Bonds
2011	Meredith Drive	86th St. to NW Urbandale Dr.	Widening		\$2,059,000			\$2,059,000	G.O. Bonds
2011	Douglas Avenue and 75th Street	Intersection	Traffic Signal Replacement		\$140,000			\$140,000	G.O. Bonds
2011	156th Street and Douglas Parkway	Intersection	Traffic Signal Installation		\$135,000			\$135,000	G.O. Bonds
2012	Aurora Avenue	Walnut Creek Regional Park	Paving			\$857,000		\$857,000	G.O. Bonds
2012	Deer Creek Subdivision	Various Locations	Paving			\$902,800		\$902,800	G.O. Bonds

# City of Urbandale

Funding Year	Street or Route	Termini	Type of Work	Funding By Year				2010-2013 Total	Source of Local Funding
				2010	2011	2012	2013		
2012	Douglas Parkway	156th St. to West Corporate Limit	Street Construction			\$1,714,400		\$1,714,400	G.O. Bonds, Spc Assessment
2012	100th Street and NW 54th Street	Intersection	Reconstruction			\$4,500,000		\$4,500,000	G.O. Bonds, Johnston, G.O. Bonds, Spc Assessment
2012	142nd Street	Meredith Drive to North Corporate Limit	Street Construction			\$1,714,400		\$1,714,400	G.O. Bonds, Spc Assessment
2013	Aurora Avenue	112th St.	Intersection Reconstruction			\$310,000		\$310,000	G.O. Bonds
2013	Aurora Avenue	Walnut Creek	Bridge Construction			\$1,035,000		\$1,035,000	G.O. Bonds
2012	Glen Eagles Park	96th St. to Oakwood Dr.	Trail Construction			\$30,000		\$30,000	G.O. Bonds
2012	Glen Eagles Park	Connection to Glen Eagles North and Plum Dr.	Trail Construction			\$330,000		\$330,000	G.O. Bonds
2013	75th Street and Douglas Avenue	Intersection	Turn Lane Construction				\$656,000	\$656,000	G.O. Bonds
2013	NW Urbandale Drive	Douglas Ave. to Meredith Ave.	Trail Construction				\$480,000	\$480,000	G.O. Bonds
2013	Aurora Avenue and 112th Street	Intersection	Reconstruction				\$310,000	\$310,000	G.O. Bonds
2013	142nd Street	Meredith Drive to N Corporate Limit	Paving				\$1,714,400	\$1,714,400	G.O. Bonds
2010-2012	City-wide	Various Locations	Annual Concrete Street Rehabilitation Program	\$723,100	\$468,400	\$445,600		\$1,637,100	Road Use, G.O. Bonds
2010-2013	City-wide	Various Locations	Sidewalk Construction	\$335,500	\$335,500	\$335,500	\$335,500	\$1,006,500	G.O. Bonds, Spc Assessment
			<b>Total</b>	<b>\$10,908,500</b>	<b>\$3,649,000</b>	<b>\$11,393,600</b>	<b>\$3,160,400</b>	<b>\$29,111,500</b>	

## Warren County

Funding Year	Street or Route	Termini	Type of Work	Funding By Year				Source of Local Funding	
				2010	2011	2012	2013		2010-2013 Total
2010	228th Ave.	From hwy 5 to Carpenter Pl.	Right of way	\$30,000				\$30,000	Local
2012	R-57	From Rte G76 to Quebec St.	Excavation			\$1,230,000		\$1,230,000	Farm-to-Market
2012	245th Ave.	From Jesup St. to Jewell St.	Right of way			\$2,000		\$2,000	Local
2012	S23	From Hwy 92 to Hwy 5 HIMA Paving				\$1,025,000		\$1,025,000	Farm-to-Market
2013	150th Ave.	From IA 92 to G-36	Grading				\$400,000	\$400,000	Local
<b>Total</b>				<b>\$30,000</b>	<b>\$0</b>	<b>\$2,257,000</b>	<b>\$400,000</b>	<b>\$2,687,000</b>	

## City of Waukee

Funding Year	Street or Route	Termini	Type of Work	Funding By Year				2010-2013 Total	Source of Local Funding
				2010	2011	2012	2013		
2010	Alice's Road	University to Ashworth Road	Streets	\$14,000,000				\$14,000,000	Developer Contributions & TIF Rebate
2010	I-80 Interchange		Streets	\$470,000	\$4,530,000			\$5,000,000	TIF Bond, West Des Moines & Other
2012	University/Alice's		Key Intersection Improvement			\$500,000		\$500,000	TIF Rebate
<b>TOTAL</b>				<b>\$14,470,000</b>	<b>\$4,530,000</b>	<b>\$500,000</b>	<b>\$0</b>	<b>\$19,500,000</b>	

## City of West Des Moines

Funding Year	Street or Route	Termini	Type of Work	Funding By Year				Source of Local Funding	
				2010	2011	2012	2013		2010-2013 Total
2010	Valley Junction		Alley Study	\$200,000				\$200,000	G.O. Bonds
2010	Lincoln Street	S. 11th St. to S. 13th St.	Improvements	\$200,355				\$200,355	Assessment, RUT
2010	City-wide	Various Locations	Emergency Responder Traffic Lights (GO)	\$80,000				\$80,000	G.O. Bonds
2010, 2012	City-wide	Various Locations	Trails (Greenway)-Construction	\$150,000		\$500,000		\$650,000	G.O. Bonds
2010, 2013	City-wide	Various Locations	Trail Signage	\$25,000		\$25,000		\$50,000	G.O. Bonds
2011-2012	Ashworth Road Trail	Prairie View Dr. to 60th St.	Trails (Greenway)-Construction		\$50,000	\$250,000		\$300,000	G.O. Bonds
2012	105th Street	I-80 to Mills Civic Pkwy.	Paving			\$3,600,000		\$3,600,000	G.O. Bonds
2012	88th Street	EP True Pkwy. to Bridgewood Blvd.	Paving			\$1,200,000		\$1,200,000	G.O. Bonds
2012	City-wide	Various Locations	Trails (Greenway)-Land Acquisition			\$100,000		\$100,000	G.O. Bonds
2012	City-wide	Various Locations	Neighborhood Park Trails			\$400,000		\$400,000	G.O. Bonds
2012	Raccoon River Park		Parking Lots			\$150,000		\$150,000	G.O. Bonds
2012	Raccoon River Park		SB Complex Road Paving			\$30,000		\$30,000	G.O. Bonds
2012	City-wide	Various Locations	Trails (Street) - Construction			\$300,000		\$300,000	G.O. Bonds
2012	City-wide	Various Locations	Trails - Underpass			\$300,000		\$300,000	G.O. Bonds
2013	S. 60th Street	Mills Civic Pkwy. to N. End of Pheasant Ridge Dr.	Paving				\$2,000,000	\$2,000,000	G.O. Bonds
2013	Mills Civic Parkway	S. Jordan Creek Pkwy. to S. 89th St.	Paving				\$2,400,000	\$2,400,000	G.O. Bonds

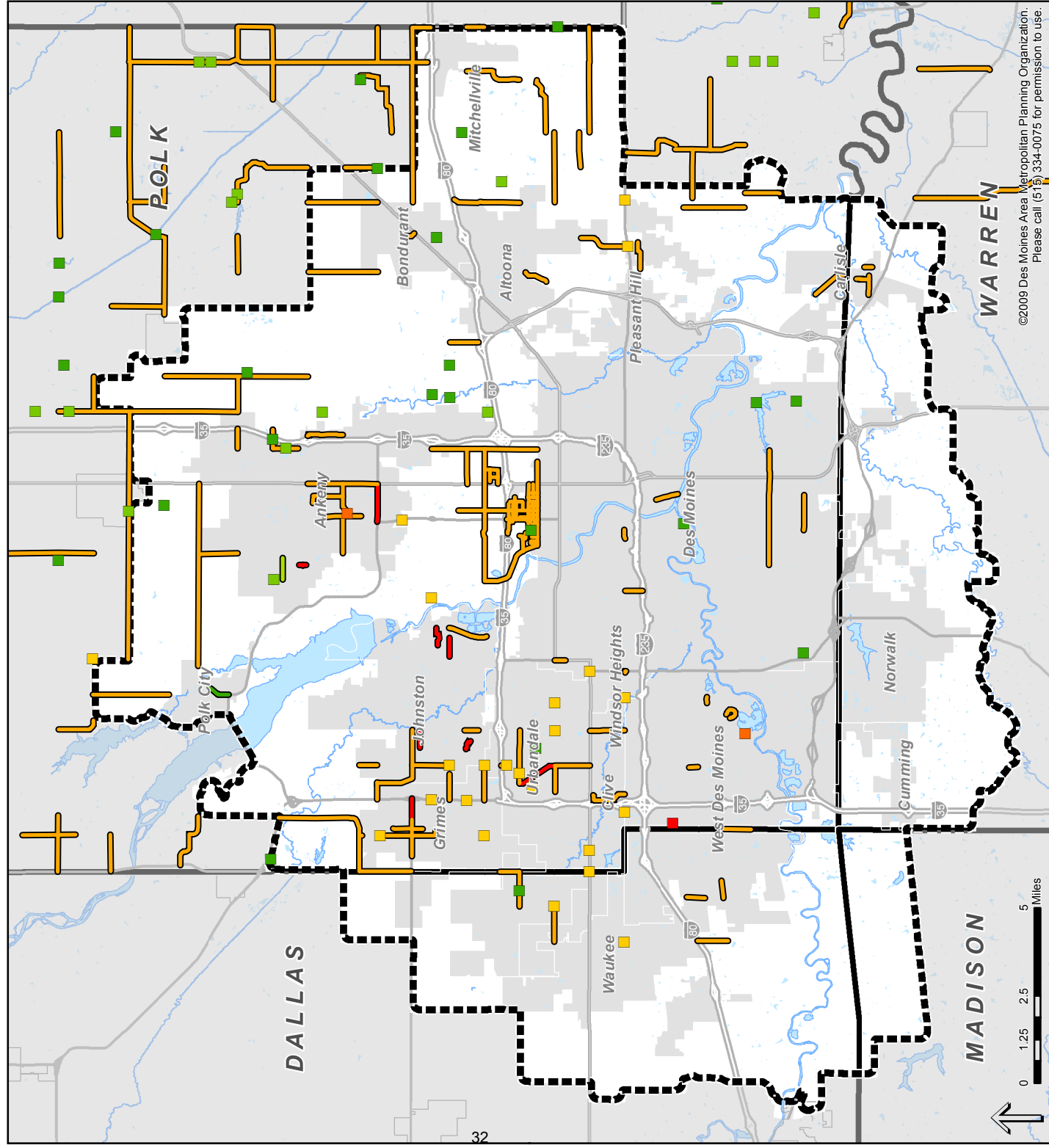
## City of West Des Moines

Funding Year	Street or Route	Termini	Type of Work	Funding By Year				Source of Local Funding	
				2010	2011	2012	2013		2010-2013 Total
2013	39th Street	Elm St. to EP True Pkwy.					\$885,000	\$885,000	G.O. Bonds
2010-2012	Westridge	Throughout Westridge Estates	Reconstruction	\$600,000	\$600,000	\$600,000	\$600,000	\$1,800,000	G.O. Bonds
2010-2012	City-wide	Various Locations	Pavement Rehabilitation Program	\$3,150,000	\$3,400,000	\$3,650,000	\$3,650,000	\$10,200,000	G.O. Bonds
2010-2012	City-wide	Various Locations	Neighborhood Improvement Program -Streets and Curbs	\$25,000	\$25,000	\$25,000	\$25,000	\$75,000	G.O. Bonds
2010-2012	City-wide	Various Locations	New Street Light Installation	\$50,000	\$50,000	\$50,000	\$50,000	\$150,000	G.O. Bonds
2010-2012	City-wide	Various Locations	Sidewalk Placement and Repair Program	\$75,000	\$75,000	\$75,000	\$75,000	\$225,000	G.O. Bonds
2010-2012	City-wide	Various Locations	Traffic Signals	\$340,000	\$350,000	\$360,000	\$360,000	\$1,050,000	G.O. Bonds
2010-2012	City-wide	Various Locations	Railroad Crossings	\$15,000	\$15,000	\$15,000	\$15,000	\$45,000	G.O. Bonds
2010-2012	City-wide	Various Locations	Durable Pavement Markings	\$50,000	\$50,000	\$50,000	\$50,000	\$150,000	G.O. Bonds
2010-2012	City-wide	Various Locations	Trail Renovation	\$150,000	\$80,000	\$80,000	\$80,000	\$310,000	G.O. Bonds
<b>TOTAL</b>				<b>\$5,110,355</b>	<b>\$4,695,000</b>	<b>\$11,760,000</b>	<b>\$5,285,000</b>	<b>\$26,850,355</b>	

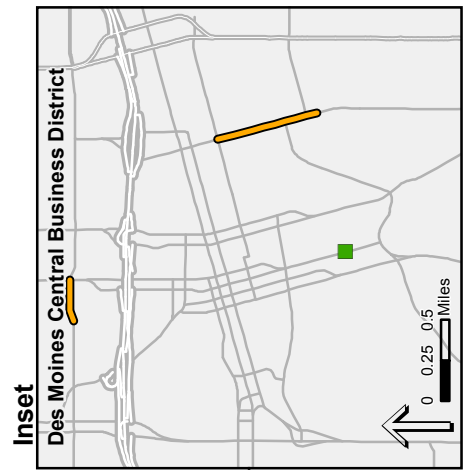
## City of Windsor Heights

Funding Year	Street or Route	Termini	Type of Work	Funding By Year				Source of Local Funding	
				2010	2011	2012	2013		2010-2013 Total
2010	Hickman Road	From 63rd St. to 6500 Hickman Rd.	Intersection Improvements and Redevelopment	\$3,700,000				\$3,700,000	Grant, TF, G.O. Bond Proceeds and General Fund
2010	Southwest corner of 63rd Street and University Avenue	SW Corner of 63rd St. and University Ave.	Streetscape Plan	\$100,000				\$100,000	Grant, TIF, Gifts
2009-2012	City-wide	Various Locations	Street Overlay and Resurfacing	\$100,000	\$100,000	\$100,000		\$300,000	RUT or General Funds
<b>TOTAL</b>				<b>\$3,900,000</b>	<b>\$100,000</b>	<b>\$100,000</b>	<b>\$0</b>	<b>\$4,100,000</b>	

# Fiscal Years 2010-2013 Transportation Capital Improvement Program Transportation System Improvements



- Legend**
- Bridge
  - Culvert
  - Interchange
  - Intersection
  - Parking
  - Road
  - Sidewalk
  - Culvert
  - Road
  - Trail
  - MPO Planning Area



Prepared by: Des Moines Area MPO  
Created: June 26, 2009



©2009 Des Moines Area Metropolitan Planning Organization.  
Please call (515) 334-0075 for permission to use.